

ModulA 32-12 180 RED

ModulA 32-12 170 RED

Version	T2 S
Nominal width	DN 32
Flow head H max.	12 m
Overall length	180 170 mm
Threaded connection	G 2"
Operating pressure max.	10 bar
Media temperature min.	+15°C
Media temperature max.	+110°C
Ambient temperature	0°C to 40°C
Ambient temperature min.	0°C
Ambient temperature max.	40°C
Net weight	4.7 kg
Gross weight	5.35 kg

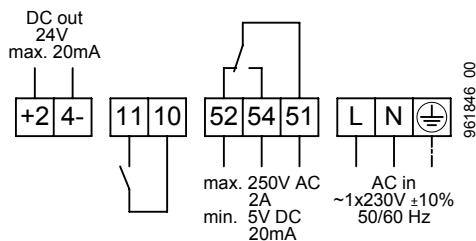
Electrical data

Voltage	1x230 V
Frequency	50/60 Hz
Power P ₁	7-182 W
Nominal current	0.08-1.36 A
Motor protection	integrated

Required operating pressure at 500m a.s.l.

at a water temp. of 75 °C	0.10 bar
at a water temp. of 95 °C	0.35 bar
at a water temp. of 110 °C	1.00 bar
for every ±100 m of altitude	±0.01 bar

Connction diagram



- +24-** 24 V DC out
- 11, 10** External OFF or external ON
- 52, 54, 51** Error or operating message
- L, N, PE** Power supply

Switch

- 1** Fault or operating message (switchable)
- 2** External OFF or external ON (switchable)
- 3** Power Limit (activatable)

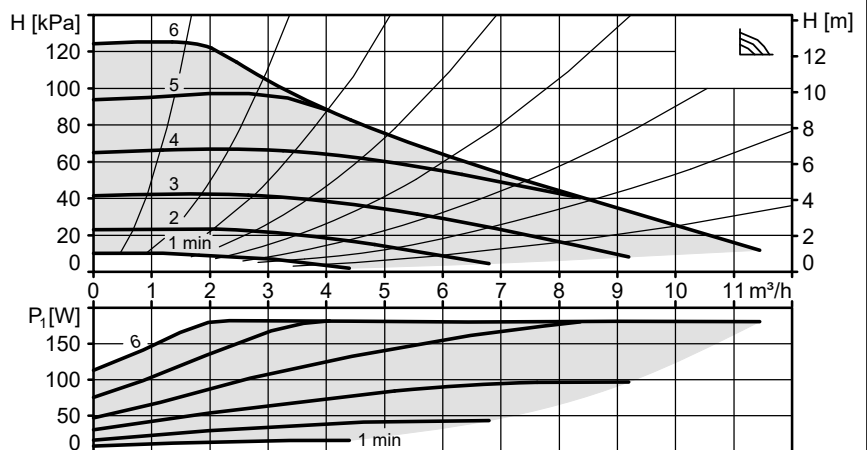
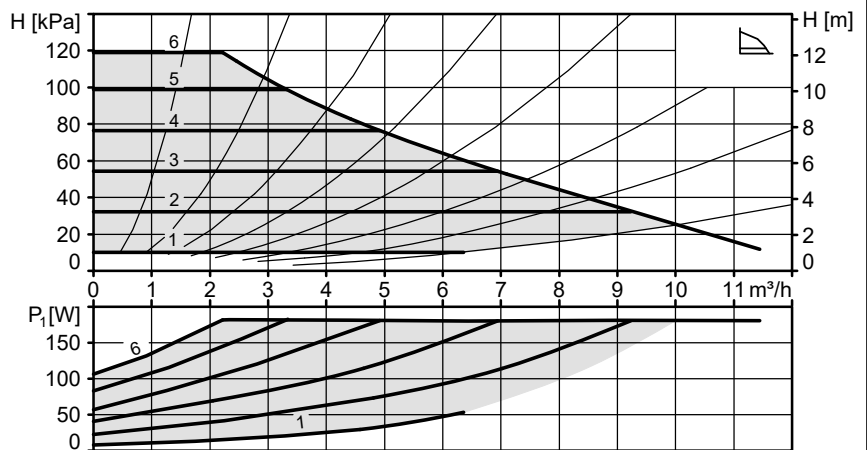
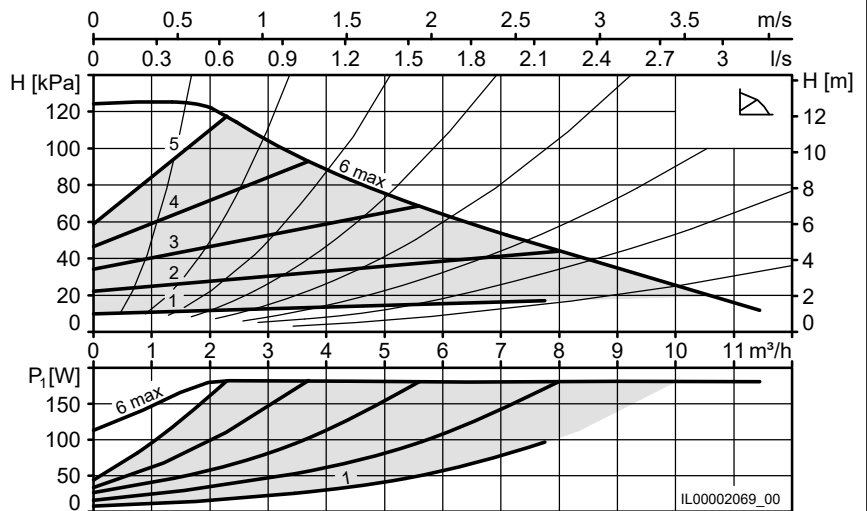
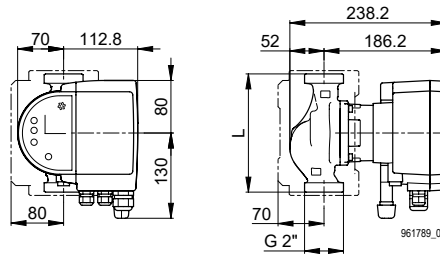
Included in the scope of delivery

- Heat insulation shell
- Biral Connector
- AFM seal

Type	Art. no.
ModulA 32-12 180 RED	7000000071
ModulA 32-12 170 RED	7000000066

ModulA 32-12 180 RED
DN 32
L = 180 mm

ModulA 32-12 170 RED
DN 32
L = 170 mm



Heizung

